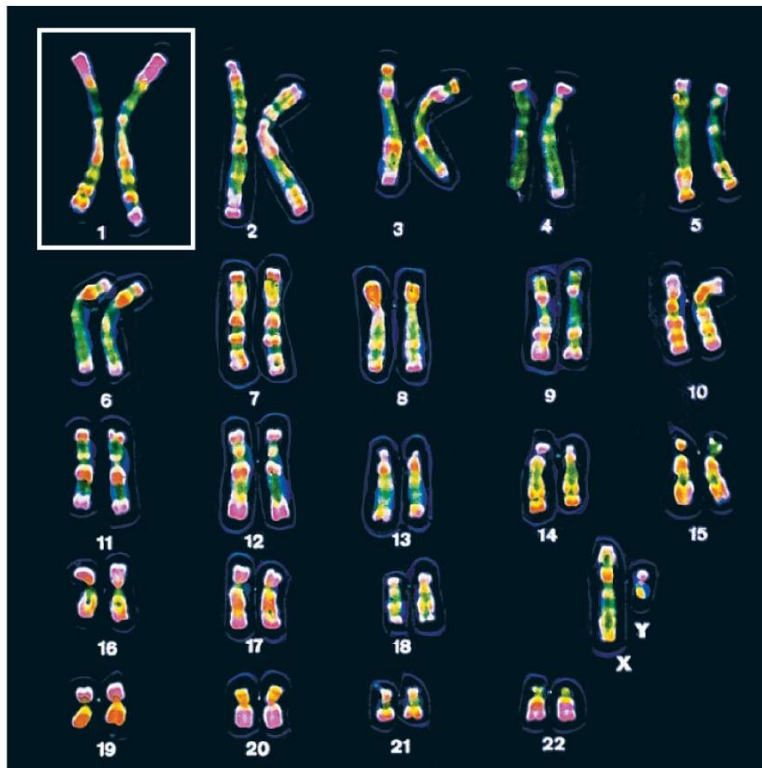
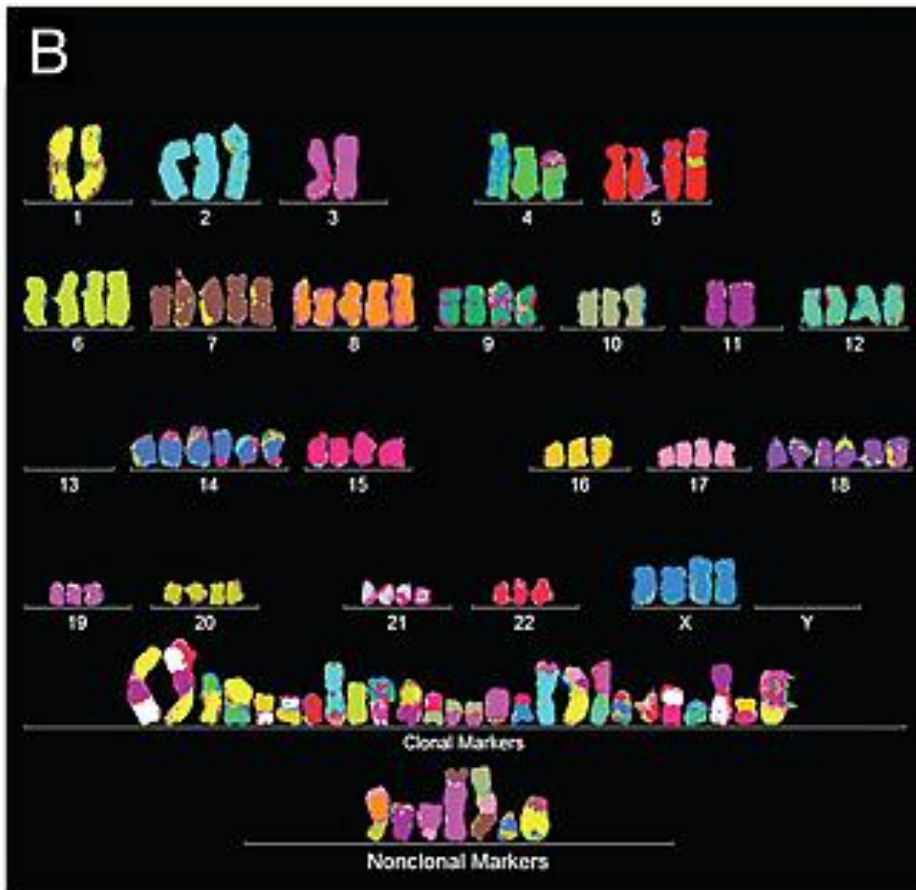


Normal Human Cell Karyotype



HeLa Cell Karyotype



Karyotype of a Patient with Chronic Myelogenous Leukemia Indicating Chromosomal Deformity



©Prof. Philippe Vago/ISM/Phototake

Figure 5. Karyotype of a Patient with Chronic Myelogenous Leukemia Indicating Chromosomal Deformity